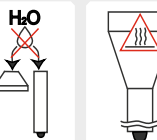
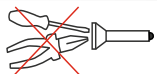
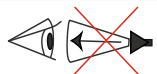


## Warnings



1. Always follow the instructions from this manual and recommendations on battery usage.
2. Apply only the recommended power sources.
3. Do not reverse battery polarity.
4. Do not use different power sources together, i.e. old ones with new ones, charged with discharged. Do not use different types of batteries combined as the element with less capacity can be damaged.
5. Do not modify or recast the flashlight and its components as it will deprive you of the warranty.
6. Do not allow water or any other liquid to leak into the flashlight.
7. Do not aim a switched-on flashlight at people's or animals' eyes – it can cause temporary blindness.
8. Do not allow children to use the flashlight without your assistance.



*The producer will not be liable for any harm done to the user if it was caused by improper use of the product.*

## Care and Storage

It is recommended to clean the threads and O-rings off dirt and old grease once or twice per year. Remember that reliable protection from water and dust cannot be provided by worn out sealing. The fouling as well as lack of lubricant cause fast wear-out of threads and sealing rings.

### To clean the threads do the following:

1. Unscrew the tailcap and remove the sealing ring carefully with a toothpick (do not use sharp metal things as they can damage the ring).
2. Wipe the sealing ring thoroughly with a soft cloth (or tissue). Do not use solvents. If the sealing ring is worn out or damaged replace it by a new one.
3. Clean the metal threads with a brush using ethanol. Be careful not to allow the applied liquid to get inside the flashlight or tailcap as it can cause fails in functionality of the flashlight.

After cleaning lubricate the thread and the sealing ring with polyalphaolefin-based silica grease, e.g. Nyogel 760G. The application of automotive and other improper grease can cause swelling and damage of the sealing rings.

In case of active operation and exploitation in dusty environments, it is recommended to perform cleaning and lubricating of the parts as often as required.

## Service and Warranty

**Armytek provides free warranty repair for 10 years (excluding batteries, chargers, switches and connectors which have 2 years warranty) from the date of purchase.**

### Warranty doesn't cover damage caused by:

1. Improper usage.
2. Attempts to modify or repair the flashlight by nonqualified specialists.
3. Longtime application in chlorinated or polluted water, or other liquids (other than water).
4. High temperatures and chemicals' exposure (including the exposure of liquid from defected batteries).
5. Usage of low-quality batteries.

### Armytek Optoelectronics Inc.

Web: [www.armytek.com](http://www.armytek.com) Email: [service@armytek.com](mailto:service@armytek.com)  
Address: 13-85 West Wilmot St, Richmond Hill, Ontario, L4B 1K7, Canada

Specifications are subject to change without notice.

# Prime PRO Magnet USB

THE MOST TECHNICALLY ADVANCED  
FLASHLIGHTS IN THE WORLD

## USER MANUAL

Thank you for choosing the products of Armytek Optoelectronics Inc., Canada.  
Please read this manual carefully before using the flashlight.

## Specifications

**Armytek Optoelectronics Inc.** is a Canadian manufacturer that produces powerful and reliable flashlights designed especially for your needs. The components made in the USA and Japan. **10 years no-hassle warranty.**

- Superb light of amazing constant brightness due to powerful electronics and active temperature control without timers.
- Rechargeable flashlight with magnet USB charger.
- Efficient TIR-optics and no "tunnel vision" effect even after continuous use.
- Warning Indication of low battery level and high temperature.
- Side switch for comfortable one-hand operation and easy modes switching.
- Multicolor State Indication and ultra low current drain in OFF-state – more than 25 years.
- Magnet, removable clip, comfortable holster and possibility of tail-stand for multipurpose use.
- Solid body without long wires, weak rubber connectors and unnecessary boxes.
- Total protection from water, dirt and dust penetration – flashlight continues to work even at the depth of 10 meters.

Model	Prime C1 Pro Magnet USB	Prime C2 Pro Magnet USB
LED / Optics	Cree XP-L / TIR	Cree XHP35 / TIR
Brightness stabilization type	FULL (constant light)	
Light output, LED / OTF lumens*	1050 / 970	2100 / 1700
Peak beam intensity, candelas	6770	9200
Hotspot / spill	20° / 80°	
Beam distance*	165 meters	192 meters
Modes, light output (OTF lumens*) and runtimes (measured with 18350 Li-Ion 900 mAh / 18650 Li-Ion 3400 mAh until the light output drops to 10% of the initial value)	Turbo2	970 lm / 30min
	Turbo1	470 lm / 1h
	Main3	230 lm / 2.4h
	Main2	90 lm / 6.5h
	Main1	34 lm / 15h
	Firefly3	6 lm / 2.5d
	Firefly2	2.5 lm / 8d
	Firefly1	0.4 lm / 60d
	Strobe3	1Hz / 90 lm / 90h
	Strobe2	1Hz / 970 lm / 3.3h
	Strobe1	10Hz / 970 lm / 1.7h
Power source	1x18350 Li-Ion	1x18650 Li-Ion
Size and weight (without batteries)	Length 91mm, body diameter 24.5mm, head diameter 24.5mm, weight 58g	Length 122mm, body diameter 24.5mm, head diameter 24.5mm, weight 62g

\* Light output for flashlights with Warm light are about 7% less, beam distances are about 3% less.



**Remember that old or low-quality batteries can be damaged under heavy load and explode.**

## Set description



### Prime **PRO** Magnet USB

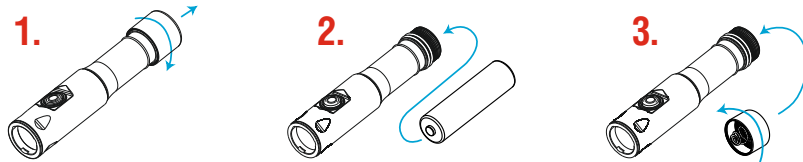
#### Items included in the package:

- 1 - Flashlight
- 2 - Holster
- 3 - Clip
- 4 - 2 spare O-rings
- 5 - 18650 Li-Ion battery (for Prime C2 Pro Magnet USB)
- 6 - Magnet USB charger
- 7 - User manual



- ✓ Your flashlight can inconsiderably differ from the pictures in the manual.
- ✓ The producer reserves the right to change the package at his own discretion without modifying this manual.

## Initial Service



#### To set/replace batteries:

1. Unscrew the tailcap.
2. Place the batteries with the positive contact (+) facing the head of the flashlight.
3. Adjust the tailcap and tighten it as far as it can go.

#### The flashlight is ready for operation.

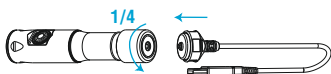


We DO NOT RECOMMEND to leave power sources inside the flashlight for a long storage period, as batteries (especially, non-rechargeable) can leak for various reasons and damage the inner parts of the flashlight. If you want to keep your flashlight in a stand-by state with batteries in then use new and high-quality batteries and store the flashlight in acceptable for batteries operational temperature and revise the batteries' state at least once a month. If you have noticed any signs of batteries' defects then withdraw them from the flashlight and utilize. It is also recommended to replace discharged batteries with new ones before the storage as the chance of leakage is higher with discharged batteries.

#### How to turn on a magnet charger:

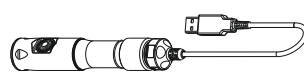
Unscrew the tailcap for 1/4 of a circle and turn on a magnet charger device to the tailcap.

Approximate time for charging a fully discharged battery is 6-8 hours. We recommend using adapters with 1A and higher.



#### Charger device battery indication:

1. Red color – the charging is going on.
2. Green color – the charging is finished.
3. Red color blinking – unscrew the tailcap for 1/4 for charging.



## Operation

#### Click x2

Main → Firefly  
Any Mode → Main

#### Press & Hold

Main1 → Main2  
Main3

#### Main



#### The flashlight has 4 Sections of modes:

[Section 1] – Firefly modes  
[Section 2] – Main modes

[Section 3] – Turbo modes  
[Section 4] – Special modes

#### In OFF state:

Click: To turn on the last used mode.

Press and hold: To turn on Firefly1 mode in [Section 1].

#### In ON state:

Click: To turn off the flashlight.

Press and hold: To start cycling through the modes of actual Section.

#### The same in OFF & ON states:

2 clicks: To turn on the Main mode [Section 2]. Then double clicks will switch modes between chosen modes in [Section 1] and [Section 2].

3 clicks: To turn on Turbo mode [Section 3].

4 clicks: To turn on Strobe mode [Section 4].

#### Flashlight has 2 types of operation:

1. **General.** The flashlight is switched on/off by 1 click.

2. **Tactical.** The flashlight will switch on in the last used mode only for the time the button is being pressed. This type of operation is useful for short-time lighting and setting signals.

To access the Tactical operation type, unscrew the tailcap to 1/4, press the button and tighten the tailcap again keeping the button pressed.

To return to the General type – press the button and while keeping it pressed – unscrew the tailcap to 1/4.

**Automemorizing.** After switching off the last used Mode is memorized for quick 1-click access at next switching on.

**Lock-out function.** Unscrew the tailcap to 1/4 for the protection from accidental switching on. State Indication will be turned off.

**Multicolor State Indication.** Shows the battery level by short flashes every 5 seconds.

**Switching Multicolor State Indication ON/OFF.** It is switched off by default in OFF-state and Firefly modes. To turn on and off: unscrew the tailcap to 1/4, press the button and holding the button pressed – tighten the tailcap and then unscrew it again. The settings will be memorized even when battery is changed. Ultra-low current consumption allows color indication to work for more than 25 years.

#### Click x2

Firefly  
Main

#### Press & Hold

OFF → Firefly1  
Firefly1 → Firefly2  
Firefly3

#### Firefly



#### Click x3

Any Mode → Turbo

#### Press & Hold

Turbo1  
Turbo2

#### Turbo



#### Click x4

Any Mode → Strobe

#### Press & Hold

Strobe1 → Strobe2  
Strobe3

#### Strobe

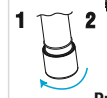


#### Switching State Indication

##### Battery level

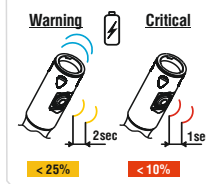


##### ON / OFF

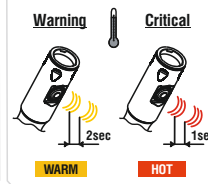


#### Press & Hold

#### Low Battery Indication



#### High Temperature Indication



#### Warning indication shows the battery level and the temperature inside the flashlight.

**Low battery level.** When it is < 25%, the color LED will show the warning level – flashing in orange color once in 2 second. With a further voltage reducing brightness will start to decrease in steps for safety of the battery and user. If brightness will be < 25% from nominal value, the main LED will flash 2 times. Critical battery level < 10% is red indicated once a second.

**High temperature.** When it increases to the warning level – the color LED flashes by orange 3 times once in 2 seconds. At critical level – it flashes by red 3 times once in 1 second, brightness starts to reduce. After cooling down the brightness increases to usual level.

**Constant light.** Powerful electronics provide constant brightness even in the Turbo1 mode, using all energy of the battery. And the Turbo2 mode gives the maximum brightness as the Overboost technology in cars, but until temperature of a flashlight and a discharge current of the battery don't exceed critical values.

**Digital Light Stabilization & Safe Soft-Start System** monitors battery voltage, starts the flashlight at an admissible brightness or decreases it by steps when the voltage dramatically fall down. These actions increase runtime, use all available energy, get longer lifetime of rechargeable battery and protect it from overdischarge or overheating.

**Active temperature control.** The flashlight can heat up in Turbo mode quickly. When the temperature become +60°C – the brightness decreases by small steps. After cooling-down (provided that battery voltage is sufficient) the brightness increases to the Turbo mode again. This stepping goes cyclically to maintain the user's safety and the flashlight's functionality. In conditions of good air-cooling the flashlight delivers light without stepping down even in Turbo mode. There are no preset timers for stepping, but real-time active temperature measurements.